



# THE COW SHED CRAIL

NEAR ST. ANDREWS • SCOTLAND

## THE COW SHED CRAIL ACCOMMODATION FOR UP TO 60

We are delighted to be able to offer accommodation packages to couples booking The Cow Shed. The properties can sleep up to 60 across 9 cottages, the farmhouse and our two converted shipping containers known as Cow Pads. The Cow Pads are available for one night stays and are separate to the packages listed below as they have less facilities available. To view and book the Cow Pads please go to [www.eastcoastcabinco.co.uk](http://www.eastcoastcabinco.co.uk)

We require a 25% deposit to book the accommodation packages and the final balance is due 10 weeks before your stay. Key code entry is used for the cottages and will be provided to you by The Cow Shed. Check in is from 4pm and check out is from 10am. The cottages are managed through a company called Kingask St Andrews, however if you would like to book these as a package then we can do this on your behalf. If guests would like to book an individual cottage then this can be done directly online.

## PACKAGE COSTS

The Cow Shed Cottages comprise of 4 cottages which can sleep 20 people and are located next to the venue, only a 2 minute walk away.

The Kirkmay Cottages are still on the farm grounds and only 0.4 miles away from the venue, a 10 minute walk (there is no lighting and the farm road can be muddy in wet weather) or short drive on a farm track. They comprise of 5 cottages and can sleep 21.

Sypsies Farmhouse is located right next to the Cow Shed and is available from 2023. It is a modern farmhouse with sea views, open plan kitchen living area with large garden. Sleeps 14. We can offer a 20% discount on the farmhouse for the off peak months of Jan, Feb, Nov and Dec (excluding Christmas and New Year).

Please note that in 2024 any bookings of the cottages and farmhouse have a 3 night minimum stay, however from the start of 2025 we now offer a 2 night minimum stay.

	2024 (price for 3 night min stay)	2025 (price for 2 night min stay)	2026 (price for 2 night min stay)
<b>Cow Shed Cottages</b>	£3900	£3900	£4330
<b>Kirkmay Cottages</b>	£3400	£3400	£3775
<b>Sypsies Farmhouse</b>	£3500	£3500	£3750

PHONE: 01333 824121

EMAIL: THECOWSHEDCRAIL@GMAIL.COM

SYPSIES FARMHOUSE, CRAIL, FIFE, KY10 3XA

WWW.THECOWSHEDCRAIL.CO.UK





# THE COW SHED CRAIL

NEAR ST. ANDREWS • SCOTLAND

All prices include utilities, wifi (please note that the internet connection can be slow due to the rural location of the cottages), linen and towels. We also have private parking for all houses and certain 'extras' like cots and highchairs which can be added on for a small fee. The cottages are all pet friendly however we do add on a small charge for dogs to help with the cleaning costs.

## ACCOMMODATION CONFIGURATIONS

### Sypsies Farmhouse (next to The Cow Shed venue):

Beautiful detached farmhouse with sea views from every room, sleeping up to 14 guests in 6 bedrooms (one is a double sofa bed). Open plan kitchen/living/dining room with folding sliding doors to the patio and garden. One other reception room. 10 min walk to Crail.



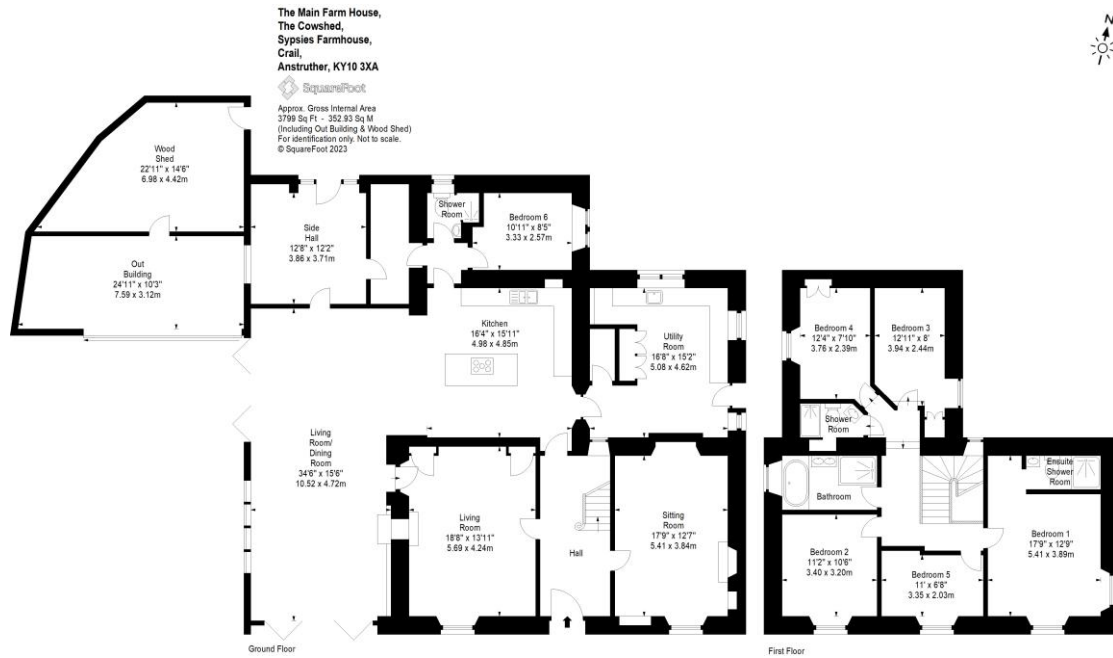
PHONE: 01333 824121  
EMAIL: [THECOWSHEDCRAIL@GMAIL.COM](mailto:THECOWSHEDCRAIL@GMAIL.COM)  
SYPSIES FARMHOUSE, CRAIL, FIFE, KY10 3XA  
[WWW.THECOWSHEDCRAIL.CO.UK](http://WWW.THECOWSHEDCRAIL.CO.UK)





# THE COW SHED CRAIL

NEAR ST. ANDREWS • SCOTLAND



The Cow Shed Cottages (closest to the venue):



PHONE: 01333 824121  
EMAIL: THECOWSHEDCRAIL@GMAIL.COM  
SYPSIES FARMHOUSE, CRAIL, FIFE, KY10 3XA  
WWW.THECOWSHEDCRAIL.CO.UK





# THE COW SHED CRAIL

NEAR ST. ANDREWS • SCOTLAND



## Meggie Allans

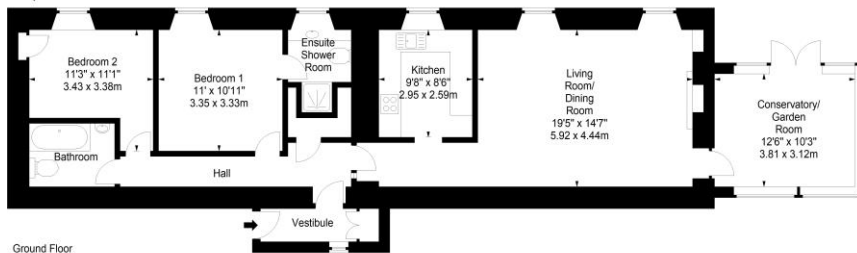
Sleeps 4 in one double room and one twin room

[http://www.propertystandrews.co.uk/property-details/Meggie\\_Allans\\_Craile-74041/](http://www.propertystandrews.co.uk/property-details/Meggie_Allans_Craile-74041/)

Maggie Allen's,  
The Cowshed,  
Sypsie Farmhouse,  
Craile,  
Anstruther, KY10 3XA



Approx. Gross Internal Area  
1093 Sq Ft - 101.54 Sq M  
For identification only. Not to scale.  
© SquareFoot 2023



PHONE: 01333 824121

EMAIL: THECOWSHEDCRAIL@GMAIL.COM  
SYPSIES FARMHOUSE, CRAIL, FIFE, KY10 3XA

WWW.THECOWSHEDCRAIL.CO.UK





# THE COW SHED CRAIL

NEAR ST. ANDREWS • SCOTLAND

## Cradle Cottage

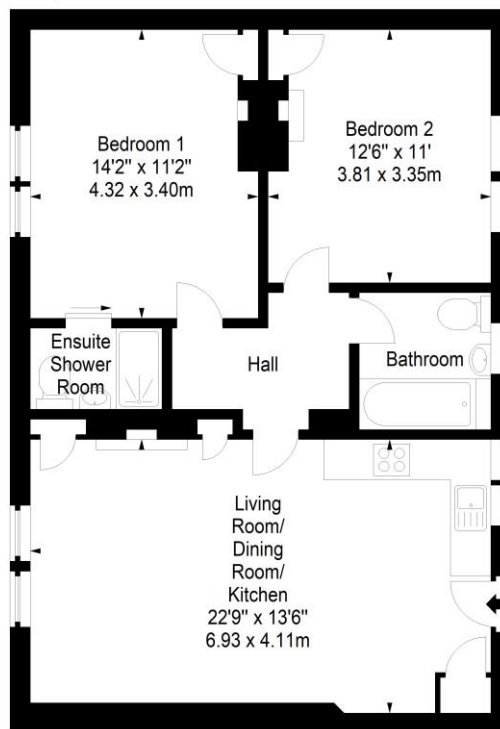
Sleeps 4 in one double room and one twin room

[http://www.propertystandrews.co.uk/property-details/Cradle\\_Cottage\\_Crail-74045/](http://www.propertystandrews.co.uk/property-details/Cradle_Cottage_Crail-74045/)

**Cradle Cottage,  
The Cowshed,  
Sypsies Farmhouse,  
Crail,  
Anstruther, KY10 3XA**



Approx. Gross Internal Area  
760 Sq Ft - 70.60 Sq M  
For identification only. Not to scale.  
© SquareFoot 2023



Ground Floor

PHONE: 01333 824121

EMAIL: [THECOWSHEDCRAIL@GMAIL.COM](mailto:THECOWSHEDCRAIL@GMAIL.COM)

SYPSIES FARMHOUSE, CRAIL, FIFE, KY10 3XA

[WWW.THECOWSHEDCRAIL.CO.UK](http://WWW.THECOWSHEDCRAIL.CO.UK)





# THE COW SHED CRAIL

NEAR ST. ANDREWS • SCOTLAND

## Sypsies Cottage

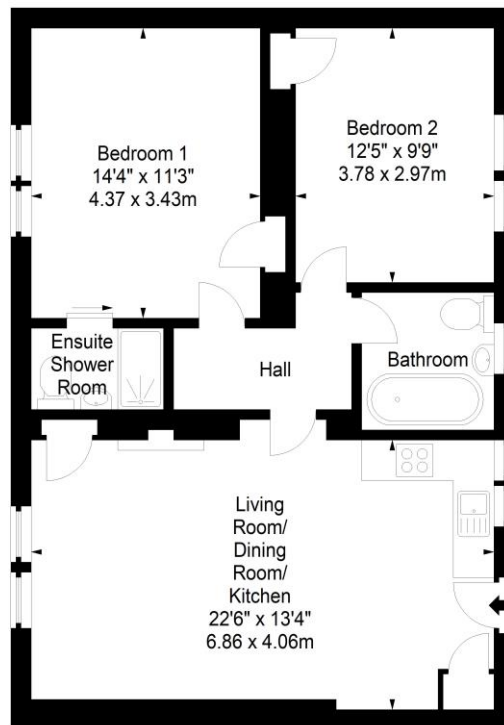
Sleeps 4 in one double room and one twin room

[http://www.propertystandrews.co.uk/property-details/Sypsies\\_Cottage\\_Crail-74047/](http://www.propertystandrews.co.uk/property-details/Sypsies_Cottage_Crail-74047/)

**Sypsies Cottage,  
The Cowshed,  
Sypsies Farmhouse,  
Crail,  
Anstruther, KY10 3XA**



Approx. Gross Internal Area  
755 Sq Ft - 70.14 Sq M  
For identification only. Not to scale.  
© SquareFoot 2023



Ground Floor

PHONE: 01333 824121  
EMAIL: THECOWSHEDCRAIL@GMAIL.COM  
SYPSIES FARMHOUSE, CRAIL, FIFE, KY10 3XA  
WWW.THECOWSHEDCRAIL.CO.UK





# THE COW SHED CRAIL

NEAR ST. ANDREWS • SCOTLAND

## Mick's Cottage

Sleeps 10 in one double room, 3 twin rooms and 1 sofa bed

[http://propertystandrews.co.uk/property-details/Micks\\_Place\\_Crail\\_-521789/](http://propertystandrews.co.uk/property-details/Micks_Place_Crail_-521789/)

Mick's Cottage,  
The Cowshed,  
Sypsies Farmhouse,  
Crail,  
Anstruther, KY10 3XA



Approx. Gross Internal Area  
1568 Sq Ft - 145.67 Sq M  
For identification only. Not to scale.  
© SquareFoot 2023



Ground Floor

PHONE: 01333 824121  
EMAIL: THECOWSHEDCRAIL@GMAIL.COM  
SYPSIES FARMHOUSE, CRAIL, FIFE, KY10 3XA  
WWW.THECOWSHEDCRAIL.CO.UK





# THE COW SHED CRAIL

NEAR ST. ANDREWS • SCOTLAND

**Kirkmay Cottages (10 minute walk/short drive):**



## **Kirkmay Cottage**

Sleeps 4 in one double room and one twin room

[http://www.propertystandrews.co.uk/property-details/Kirkmay\\_Cottage\\_Crail-74025/](http://www.propertystandrews.co.uk/property-details/Kirkmay_Cottage_Crail-74025/)

## **Nuttings Cottage**

Sleeps 4 in one double room and one twin room

[http://www.propertystandrews.co.uk/property-details/The\\_Nuttings\\_Cottage\\_Crail-74007/](http://www.propertystandrews.co.uk/property-details/The_Nuttings_Cottage_Crail-74007/)

## **May Isle Cottage**

Sleeps 2 in one twin room

[http://www.propertystandrews.co.uk/property-details/May\\_Isle\\_Crail-74027/](http://www.propertystandrews.co.uk/property-details/May_Isle_Crail-74027/)

## **Kirkmay 4 Cottage**

Sleeps 6 in two double rooms and one twin room

[http://www.propertystandrews.co.uk/property-details/Kirkmay\\_4\\_Crail-74029/](http://www.propertystandrews.co.uk/property-details/Kirkmay_4_Crail-74029/)

## **Lairdsgate Cottage**

Sleeps 5 in one double room, one twin room and one single room

[http://www.propertystandrews.co.uk/property-details/Lairdsgate\\_Crail-74031/](http://www.propertystandrews.co.uk/property-details/Lairdsgate_Crail-74031/)

*We advise couples to book the accommodation at the time of booking the venue. Availability of the accommodation is not guaranteed as the cottages are also advertised for holiday accommodation.*

PHONE: 01333 824121

EMAIL: THECOWSHEDCRAIL@GMAIL.COM

SYPSIES FARMHOUSE, CRAIL, FIFE, KY10 3XA

WWW.THECOWSHEDCRAIL.CO.UK

